



Drywall Bead Access Door



High Security Access Door



Insulated, Fire Rated Access Door



Recessed Access Door



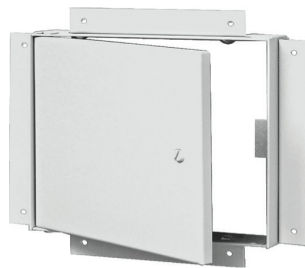
Universal Access Door



Drywall Bead Recessed Access Door



PA Plastic Snap in Panel



Door Flush With Frame



Door Flush With Frame, Plaster Finish

# Features and Benefits

All MIFAB® access doors are **painted white**. White is easier to paint over than grey because fewer coats of paint are needed to cover the prime finish. Most other manufacturers paint their doors grey!

Universal Access (UA) Doors and Insulated Fire Rated (MPFR) doors have **rounded outside corners** – for maximum safety, ease of handling and clean appearance. Other manufacturers have square edged outside corners.

The MIFAB® Universal Access Doors, our most popular model, have a **four piece frame construction** which provides a more rigid frame from the overlap of the four pieces interlocked together.



Door panel has a **1/4" turnback around the four sides**. This turnback strengthens the door panel.

\*Custom sized Access Doors and stainless steel options are also available – minimum orders may apply. Lead times up to 12 weeks.

## Series UA - Universal Access Door



### DESCRIPTION

The MIFAB® UA is a multi-purpose access door. It is designed for flush installation into drywall, block or tile, walls and ceilings.

Frame features rounded outside corners, concealed hinge, flush with frame fit. It has a unique white finish. Door is formed for rigidity and safety from 3/8" turnback in the door panel.

### SPECIFICATIONS

**Material:** 16 gauge satin coat steel door and frame.

**Finish:** Satin coat doors have a primed white finish.

**Door:** Flush to frame. Turned back around edges for extra rigidity.

**Frame:** Pre-punched mounting holes for simple installation.

**Hinge:** Concealed pivot pins.

**Lock:** Standard – Flush mounted, screwdriver operated cam. Optional: cylinder key.

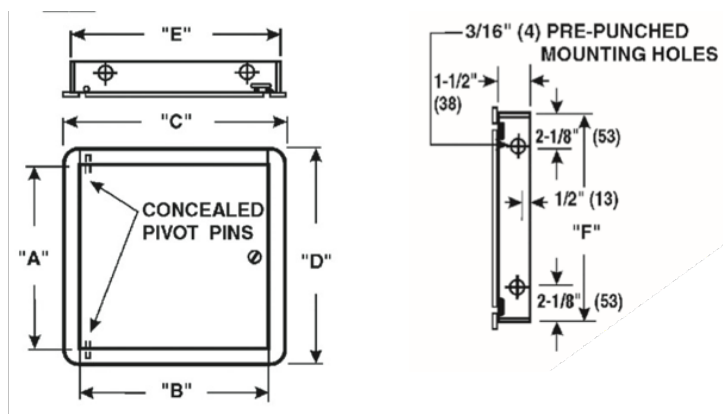
### DIMENSIONS FOR UA ACCESS DOORS

**A-B** = Door Size

**C-D** = Overall Dimensions – Door Size - Plus 2 1/8"

**E-F** = Wall Opening - Door Size - Plus 3/8" (9.525mm)

"B" x "A"	WALL OPENING	ACCESS DOORS	MAG Product Code
12" x 12"	12 3/8" x 12 3/8"	300mm x 300mm	91004
14" x 14"	14 3/8" x 14 3/8"	350mm x 350mm	91005
18" x 18"	18 3/8" x 18 3/8"	450mm x 450mm	91007
24" x 24"	24 3/8" x 24 3/8"	600mm x 600mm	91009



Note: The hinge is always furnished on the "A" or height (longer) dimension, unless otherwise specified.

## Series MDW - Drywall Bead Access Door



### DESCRIPTION

The MIFAB® MDW access door is designed for installation after the drywall has been applied and when a concealed outer flange is required. The outer frame has a galvanized drywall taping bead on all sides. Drywall cement can be applied over the beading at the same time as the wallboard joints and corners. Only the door is visible. It has a unique white finish.

### SPECIFICATIONS

**Material:** 16 gauge satin coat steel door and frame.

**Finish:** Satin coat doors have a primed white finish.

**Door:** Flush to frame. Turned back around edges for extra rigidity.

**Frame:** Pre-punched mounting holes for simple installation.

**Hinge:** Concealed pivot pins.

**Lock:** Standard – Flush mounted, screwdriver operated cam. Optional: cylinder key.

## Series MPFR – Insulated, Fire Rated Access Door



### DESCRIPTION

The MIFAB® MPFR insulated fire rated access door is approved by Underwriters Laboratories Inc., for 1 1/2 hours, “B” label in walls and is approved by Warnock Hersey for 2 hours in ceilings and 3 hours in walls. The door meets ANSI-UL 10B standards. The same door can be used in walls and ceilings.

Tests were conducted using mild steel and Type 304 stainless steel.

### SPECIFICATIONS

**Material:** 16 gauge satin coat steel door with 20 gauge backliner.

**Finish:** Satin coat doors have a primed white finish.

**Door:** Flush to frame. Self-closing. Can be opened from the inside or back of the door with MIFAB’s unique thumb turn latch.

**Frame:** Four piece welded frame with masonry mounting straps.

**Hinge:** Concealed pivot pins.

Spring: Heavy duty.

**Lock:** Standard – Flush mounted, screwdriver operated cam.

Optional: cylinder key.

## Series CAD - Recessed Access Door



### DESCRIPTION

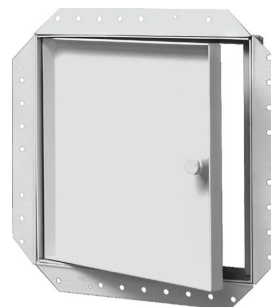
The MIFAB® CAD recessed access door is designed for use in acoustical, drywall or tiled surfaces.

Suitable for walls and ceilings.

The door panel is recessed 5/8” (15) to allow the insertion of various types of material.

Only the thickness of the door and frame edges are exposed.

## Series CAD-DW – Drywall Bead Recessed Access Door



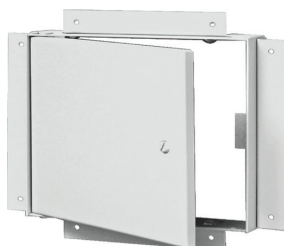
### DESCRIPTION

The MIFAB® CAD-DW recessed access door is designed for use in acoustical, drywall or tiled surfaces.

Suitable for walls and ceilings.

The door panel is recessed 5/8” (15) to allow the insertion of various types of material. The outer frame has a galvanized drywall taping bead. Drywall cement can be applied over the beading at the same time as the wallboard joints and corners.

## Series CAD-FL – Recess In Frame, Door Flush With Frame



### DESCRIPTION

The MIFAB® CAD-FL recessed access door is designed for flush installation in a drywall or plaster surface. The door panel is flush with the frame.

When installed flush with the wall or ceiling, only the door panel is exposed.

A mounting bracket is recessed 5/8” (15) from the door.

## Series CAD-FL-PL – Recess In Frame, Door Flush With Frame, Plaster Finish



### DESCRIPTION

The MIFAB® CAD-FL-PL recessed access door is designed for flush installation in a drywall or plaster surface. The door panel is flush with the frame.

When installed flush with the wall or ceiling, only the door panel is exposed.

A 2 3/4” (70) wide metal lathe on all sides provides a rigid frame. A mounting bracket is recessed 5/8” (15) from the door.