

MAG-Safe Water

Anti-Legionella Filters



Anti-Legionella Outbreak Protection

Point-of-use Legionella Filters for Hospitals, Aged Care, Hotels, Schools and other at-risk facilities.

MAG-Safe Water Anti-Legionella Filters are a powerful and approved legionella filter to effectively stop Legionella spp.






These attractive and easy-to-use filters deliver confidence that no matter what, the final leg that reaches the patient/customer, is safe.

Safe Water's core business is the development, production and distribution of specialist water filtration products to combat bacteria, such as Legionella, and other harmful pathogens found in water. Products are developed in-house at the Safe Water headquarters in Belgium.

Safe Water filters are effective Immediately, independently tested (see Compliance page) and compliant to US and EU standards.



BENEFITS

	Long Lifespan	> 5,000 Litres
	Reusable	Easy exchange of filters
	Lab Tested & Certified	> Log 7 bacteria reduction
	Ultrafiltration	Pore size smaller than all bacteria
	Cost Effective	Lasts longer than competitors' products



PRODUCT CODE

DESCRIPTION

SS-886	Shower-Safe Legionella Filter
SS-885	Tap-Safe Legionella Filter
SS-883	Inline-Safe Legionella Filter

Replacement Membrane (filters)

SS-1	Suit SS-885
SS-2	Suit SS-883 and SS-886

Features & Benefits

LONG LIFESPAN

90+ days lifespan

Depending on water quality and usage, a Shower-Safe filter can last for several months based on the frequency of showering and the clarity of source water.

Quick Look at lifespan

- ✓ Industry leading lifespan
- ✓ Large volume filtering capacity
- ✓ No shelf-life or expiration date
- ✓ Optional pre-filter for extended life
- ✓ Amazing pressure even with low flow-rates

REUSABLE

Replaceable Filter

Reduce costs and reduce waste with a high-quality product allowing you to replace the expended filter cartridge and keep using the rest of the product for years.

How to reduce and reuse

- ✓ Investment once in full filter unit
- ✓ Estimate water quality and use
- ✓ Install and monitor water flow
- ✓ Schedule filter replacement
- ✓ Follow replacement instructions

LAB TESTED

Log 7 Reduction

Log 7 reduction means 99.99999% bacteria is removed from the water. The filter has been determined to have the ability of preventing transfer of Legionella pneumophila beyond its enclosed hollow fiber membrane by Industrial Microbiological Services, Ltd. (IMSL).

Lab-tested Results

- ✓ Effective as a barrier to transmission
- ✓ More than 99.99999% reduction
- ✓ No Legionella passed through
- ✓ Lab simulated long term use
- ✓ The product exceeds Log 7

ULTRAFILTRATION

Micrometer pore

The Environmental Protection Agency (US) criterion for bacteria removal is that the membrane should filter out any bacteria 1 micron or larger. The absolute pore size of the membrane is less than one micron at roughly 0.08 micron.

What does this mean?

- ✓ Meets EPA criteria
- ✓ Micrometer pore size
- ✓ Smaller than all bacteria
- ✓ Effectively filters all bacteria
- ✓ Classifies as Ultrafiltration

CERTIFIED

Fully certified - Certifications

- ✓ ASTM
- ✓ KIWA BRL
- ✓ CE Marked
- ✓ UKAS
- ✓ IMSL
- ✓ NSF/WRAS

COST EFFECTIVE

Invest Safely

Anti-Legionella filters are very cost effective and a great investment considering how long the filter lifespan is compared to the majority of competitor filters. This is in part due to the innovative design that produces a high-pressure feel at decreased water pressure. They simply last longer than normal.

Quick look at benefits

- ✓ Reusable and replaceable parts
- ✓ Longer lasting than competition
- ✓ Available pre-filter extends life
- ✓ Water-saving flow-rates
- ✓ Avoid costly shut-downs

Compliance

Safe Water products are made from **NSF/WRAS** approved materials and are undergoing constant tests at the world's best laboratories.

Kiwa BRL certificate demonstrates that products are made from the safest of materials, comply with 100% Quality Control checks and the filters were laboratory tested to prove effectiveness. The **Kiwa** mark on a product means that the product complies with all standard requirements. **Kiwa** conducts periodic unannounced inspections and product testing at our manufacturing sites to verify that the product continues to comply with the standard.

The mark also provides:

- Knowledge that an impartial review against established criteria or guidelines has been conducted
- Evidence that product labelling and claims have been objectively reviewed by a trusted third party
- A way to differentiate our product from our competitors' and provide the best product in the market
- Evidence of our organization's company-wide commitment to quality, compliance and safety
- Backing by a team of professionals dedicated to public health and safety operating in more than 150 countries around the world

NSF-WRC – Filter material and housings meet NSF-WRC standards.



IMSL – Industrial Microbiological Services Ltd. Tested the products and determined that no legionella bacteria could pass the filters.



Kiwa BRL-K1410 – Certifies that our products are made from the safest of materials, comply with 100% Quality Control checks & the filters are laboratory tested to ensure effectiveness.



AIM – Tests indicate that the SWP membranes can reduce the number of Legionella Pneumophila by at least 7 Logs.

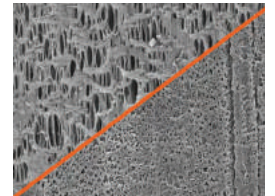


Nelson Labs – The test procedure complies with the key aspects of ASTM F838.

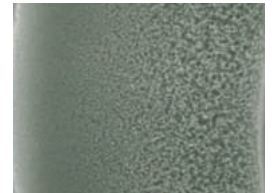


FILTER TECHNOLOGY

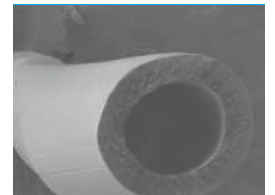
The filter material prevents organic and inorganic contaminants down to 0.15 microns. Note the more consistent holes in our membrane material.



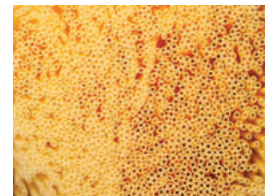
Water penetrates from the outside (left hand side) to the inside (right hand side) and passes through a multitude of ever increasing pore sizes thus encouraging fluid flow.



Each fibre end is terminated in sealant within the filter housing thus preventing the buildup of bacteria if present from passing through the fibre wall into the main outflow.



Hundreds of fibres terminating in the filter housing. Although tightly packed, each fibre is unrestricted, thus allowing a high flow rate with minimal pressure drop.



The filter technology ensures a strong flow of filtered water. Good design together with high quality filter material results in a more efficient safe water experience.





SS-886: Shower-Safe Legionella Filter

Safe Water Shower-Safe Legionella Filter is a powerful and approved Point-Of-Use Tap legionella filter to effectively stop Legionella spp.

Shower-Safe will successfully remove 99.99999%^^ of all bacteria and still cope with the high flow rates typical of a domestic water system in all types of buildings.

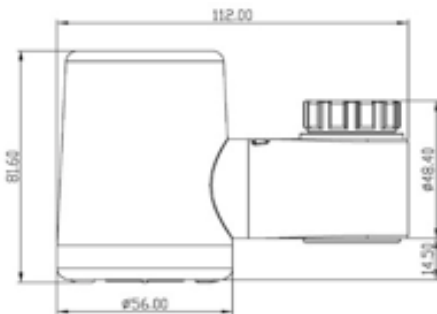
Ideal for all commercial locations, Shower-Safe will fit all flexible shower hoses. Even if water is not run for an extended period, Shower Safe works perfectly – just run water through it for over a minute before use.

- Compact
- Shower-Safe Legionella Filter enables users to replace legionella filters rather than throw away a perfectly serviceable filter housing
- Save money - costs of replacing filters are significantly less than total product replacement
- Standard size used in all type of shower heads
- 12-month warranty for the plastic housings

Technology:	Hollow Fibre Membrane	
Performance^:	Rated Capacity	5,000 Litres (approx. 160 showers)
	Life Time	Several months depending on water quality and usage
	Flow Rate	6 L/min at 200 kPa
Compliance:	Biological retention^^	bacteria log7 (IMSL)
	Mechanical effects	turbidity reduction
	Material safety	extraction tests
	Structural integrity	hydrostatic pressure 800 kPa
Operating conditions:	Max. operating pressure	500 kPa
	Operating temperature	Min. 0°C; Max. 40°C 60°C for 30 min. during lifetime
	Replacement interval	Several months depending on water quality and usage
	Chlorine exposure	100 ppm
Dimensions:	Overall length: 235 mm x Overall diameter: 58 mm	
Connection:	To main 1/2" BSP	
Storage & Handling:	Keep dry during storage. Protect against freezing after first use	

^ Performance is dependent on incoming water conditions.

^^ Tested by Industrial Microbiological Services Ltd UK.



SS-885: Tap-Safe Legionella Filter

Safe Water Tap-Safe Legionella Filter is a powerful and approved Point-Of-Use Tap legionella filter to effectively stop Legionella spp.

Simply connect with tap to ensure complete safety.

- Compact
- Tap-Safe Legionella Filter enables users to replace legionella filters rather than throw away a perfectly serviceable filter housing
- Save money - costs of replacing filters are significantly less than total product replacement
- 12-month warranty for the plastic housings

Technology:	Hollow Fibre Membrane	
Performance[^]:	Rated Capacity	5,000 Litres
	Life Time	Several months depending on water quality and usage
	Flow Rate	4.4 L/min at 200 kPa
Compliance:	Biological retention ^{^^}	bacteria log7 (IMSL)
	Mechanical effects	turbidity reduction
	Material safety	extraction tests
	Structural integrity	hydrostatic pressure 800 kPa
Operating conditions:	Max. operating pressure	500 kPa
	Operating temperature	Min. 0°C; Max. 40°C 60°C for 30 min. during lifetime
	Replacement interval	Several months depending on water quality and usage
	Chlorine exposure	100 ppm
Dimensions:	Overall length: 112 mm x Overall diameter: 56 mm	
Connection:	Tap	
Storage & Handling:	Keep dry during storage. Protect against freezing after first use	

[^] Performance is dependent on incoming water conditions.

^{^^} Tested by Industrial Microbiological Services Ltd UK.



SS-883: Inline-Safe Legionella Filter

Safe Water Inline-Safe Legionella Filter is a powerful and approved legionella filter to effectively stop Legionella spp.

Simply connect the Inline-Safe Legionella Filter to the water supply with its standard sized 1/2 inch male/female BSP thread to ensure complete safety.

- Inline-Safe Legionella Filter enables users to replace legionella filters rather than throw away a perfectly serviceable filter housing
- Save money - costs of replacing legionella filters are significantly less than total product replacement
- Can be used in showers, under sinks, ice machine or other water device to ensure that bacteria free water is produced
- 12-month warranty for the plastic housings

Technology:	Hollow Fibre Membrane	
Performance[^]:	Rated Capacity	5,000 Litres
	Life Time	Several months depending on water quality and usage
	Flow Rate	6 L/min at 200 kPa
Compliance:	Biological retention ^{^^}	bacteria log7 (IMSL)
	Mechanical effects	turbidity reduction
	Material safety	extraction tests
	Structural integrity	hydrostatic pressure 800 kPa
Operating conditions:	Max. operating pressure	500 kPa
	Operating temperature	Min. 0°C; Max. 40°C 60°C for 30 min. during lifetime
	Replacement interval	Several months depending on water quality and usage
	Chlorine exposure	100 ppm
Dimensions:	Overall length: 130 mm x Overall diameter: 58 mm	
Connection:	To main 1/2" BSP	
Storage & Handling:	Keep dry during storage. Protect against freezing after first use	

[^] Performance is dependent on incoming water conditions.

^{^^} Tested by Industrial Microbiological Services Ltd UK.



Replacement Membrane Filters

SS-1 Suit SS-885 Tap Safe

SS-2 Suit SS-883 Inline-Safe and SS-886 Shower-Safe

The filter contains a 0.01-0.15µm membrane incorporating pre-filtration which can be used routinely at temperatures of up to 60°C, while withstanding a max. temperature of 70°C for a total cumulative period of 30 minutes over the life of the filter.

The filter can deliver high volume throughput over an extended period and is therefore a cost effective method of providing patient protection within a contaminated water supply.

Changing the filter

The filter will need to be changed when the flow rate is so low that it no longer gives a strong stream of water. The filters are designed to block particles of a certain size and as such begin to become less effective when they have been used for some time as the filters become blocked.

Water quality and usage of the products dictate when they should be changed.

Technology:	Hollow Fibre Membrane		
Performance[^]:	Rated Capacity	SS-1	5,000 Litres
		SS-2	5,000 Litres
	Life Time	Several months depending on water quality and usage	
	Flow Rate	SS-1	4.4 L/min at 200 kPa
		SS-2	6 L/min at 200 kPa
Compliance:	Biological retention ^{^^}	bacteria log7 (IMSL)	
	Mechanical effects	turbidity reduction	
	Material safety	extraction tests	
	Structural integrity	hydrostatic pressure 800 kPa	
Operating conditions:	Max. operating pressure	500 kPa	
	Operating temperature	Min. 0°C; Max. 40°C 60°C for 30 min. during lifetime	
	Replacement interval	Several months depending on water quality and usage	
	Chlorine exposure	100 ppm	
Dimensions:	SS-1	Overall length: 72 mm x Overall diameter: 31 mm	
	SS-2	Overall length: 87 mm x Overall diameter: 31 mm	
Connection:	SS-1	To fit SS-885 Tap Safe	
	SS-2	To fit SS-883 Inline-Safe and SS-886 Shower-Safe	
Storage & Handling:	Keep dry during storage. Protect against freezing after first use		

[^] Performance is dependent on incoming water conditions.

^{^^} Tested by Industrial Microbiological Services Ltd UK.

Testimonials



Nant Ltd is a pioneer in providing water safety services and products specialising in Legionella Control all over the UK for over 22 years. They service over 2500+ sites all over the UK including residential care, healthcare but not limited to hospitality, retail, leisure, education industries. **Nant Ltd** is a well-regarded and is a trusted name in Legionella Control & Water safety. All work carried out by its certified engineers conforms to industry legislation like **ACoP L8, HSG274, HTM 04-01** etc.

We have been dealing with **Safe Water Products** for over 2 years and we have found their products to be highly innovative and of premium quality. Their products are durable, last 3 times longer than the nearest competition whilst being highly cost effective. I can't recommend Safe Water Products enough to anyone who requires Legionella Safe Filters. We have become huge advocates of their product as it has allowed us to penetrate new markets which we did not have access to before.

- Imran Ishaq - Marketing Manager Nant Ltd



Holland Building Maintenance is a provider of advice on all manner of water related issues within the Benelux market. We rely on our partners to provide us with the best available products to help us provide the expert advice and solutions that our clients need. We have been using the water filtration products of **Safe Water Product** (SWP) for the last 5 years. Prior to our cooperation with SWP we tried other known and more expensive brands but without exception, the quality, longevity and price of the SWP products proved to be far superior.

In hard water areas, which we often encounter, we found that the SWP filters lasted much longer than those of the competition. (Sometimes 3 times longer). In addition, the ease with which the filters could be replaced made it the most convenient choice for our customers.

When the filters had to be replaced, the cost of the replacement filters was also a big attraction to our price conscious customers. Some of the previous products that we tried were disposable and had to be thrown away after only 31 days of use, whereas the SWP product lasted up to three times longer, depending on water quality and usage.

Our objective as a company is to provide a product that not only excels in performance but offers a price and quality acceptable to our customers as well as an environmental advantage with less waste.

- Nils de Jong - Managing Director



These highly attractive and easy-to-use filters are preferred by our network of hospitals because they give us confidence that--no matter what happens with the water--the final leg that reaches the patients is safe. The filters that reach capacity are easy to spot and change, so there's a cost-effective safety net no matter what happens.

- JD Moore - President, Legionella Water Filters USA.