

Butterfly Valve Wafer and Lug Type 65mm through 250mm

**SUITABLE FOR
GENERAL PLUMBING**

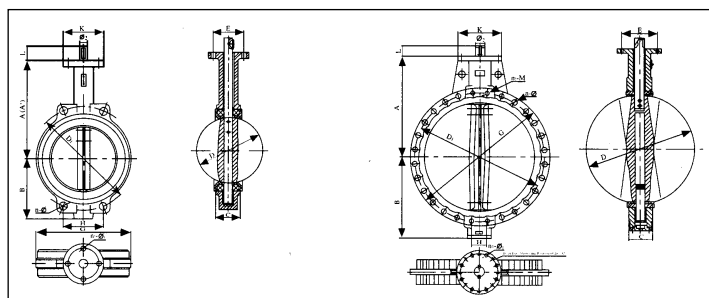
MAIN FEATURES

WAFER & LUG TYPE 65mm THROUGH 250mm Butterfly Valve

Technical Data:

Normal pressure: 1,0 and 1,6 Mpa
 Body testing pressure: 1,5Mpa for PN10 and 2,4Mpa for Pn16
 Sealing test pressure: 1,1Mpa for PN10 and 1,76 for PN16
 Working temperature: 10-150°C

Both wafer and lug type are available, surface with epoxy coated also available.



MATERIAL OF MAIN PARTS

Body	Cast iron, ductile iron, aluminium bronze, stainless steel, carbon steel
Disc	Ductile iron zinc coated, aluminium bronze, stainless steel ect.
Stem	Stainless steel, carbon steel ect.
Bushing	Lubricated bronze, PTFE ect.
Seat	EPDM, NBR, VITON, PTFE etc.



MAIN DIMENSIONS

Size (mm)	inch	A	A*	B	C	D	L	H	DI	N-Ø	K	E	n1-Ø	Ø2	G	n2-M	Weight (kg)
65	2.5"	175	134	89	44.7	64.5	32	96.2	136.2	4-26.5	77	57.15	4-6.7	12.6	137	--	3.2
80	3"	181	141	95	45.2	78.8	32	61.23	160	8-18	77	57.15	4-6.7	12.6	143	--	3.6
100	4"	200	156	114	52.1	104	32	70.80	185	4-24.5	92	69.85	4-10.3	15.77	156	--	4.9
125	5"	213	168	127	54.4	123.3	32	82.28	215	4-23	92	69.85	4-10.3	18.82	190	--	7
150	6"	226	184	139	55.8	155.6	32	91.08	238	4-25	92	69.85	4-10.3	18.92	212	--	7.8
200	8"	260	213	175	60.6	202.5	45	$\frac{112.89}{76.35}$	295	$\frac{4-25}{4-23}$	115	88.9	4-14.3	22.10	268	--	13.2
250	10"	292	244	203	65.6	250.5	45	92.40	357	4-29	115	88.9	1-14.3	28.45	325	--	19.2

Note: The two dimensions in one column show the connection dimensions of PN10/PN16 separately

The flange dimensions (D1 and n-Ø) can be fitted with the following flange standard: DIN 2501, BS4504, BS10 Table E, ISO 2084, ISO2531, ANSIB16.1/125 ect.