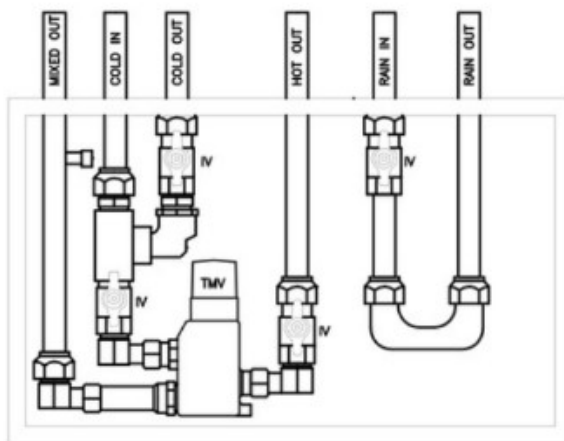


Pre-Plumbed FM Mattsson 3 - 7 pipe configurations

MAG: Specialised Plumbing Products



MATTSSON PRESSURE BALANCED
THERMOSTATIC MIXING VALVE- MODEL 9230-0014
NOT TO SCALE

PBTMV 9230/INT SS BOX,
6 PIPES ONE WAY COLD/RAIN WATER BYPASS.
400x300x75 SS BOX/DOOR FRAME 440x340x15



Products

Pre-plumbed MAG-TMV with 4 Pipes.....	4
MAG-TMV with 4 Pipes - Thermal Flush	6
MAG-TMV with 4 Pipes - Thermal Flush	8
PBTMV Pre-Plumbed Standard Box	9
PBTMV Pre-Plumbed 3 Pipes One Way	10
MAG Mattsson Mark II Pre-Plumbed Box.....	11
MAG MATTSSON MARK II TMV Cabinet DF Finish.....	12
6 Pipe System incl cold and hot water bypass	13
5 Pipe System incl cold and hot water bypass	14
5 Pipe System incl cold and hot water bypass rainwater connection	15
7 Pipe System incl cold and hot water bypass and rain water connection.....	16
FM Mattsson Maintenance Requirements	17

Pre-Plumbed	
9230-0001	4 Pipes One Way with Cold Water Bypass - Concealed Box
9230-0002	4 Pipes Two Way with Cold Water Bypass - Concealed Box
9230-0003	4 Pipes One Way with Cold Water Bypass - Wall Mounted Box
9230-0004	4 Pipes Two Way with Cold Water Bypass - Wall Mounted Box
9230-0005	3 Pipes One Way - Concealed Box
9230-0006	3 Pipes Two Way - Concealed Box
9230-0007	3 Pipes One Way - Wall Mounted Box
9230-0008	3 Pipes Two Way - Wall Mounted Box
Mark II	MAG Mattsson Mark II TMV Cabinet DF Finish
9230-001	6 Pipe System including cold and hot water bypass
9230-0013	5 Pipe System including cold and hot water bypass
9230-0014	6 Pipe System including hot water bypass and rainwater connection
9230-0015	7 Pipe System including cold and hot water bypass and rain water connection
9230-ECCI	4 Pipe System including Electronic Compartment
Maintenance	
FM Mattsson Maintenance Requirements	
Unique Benefits of FM Mattsson Valves	

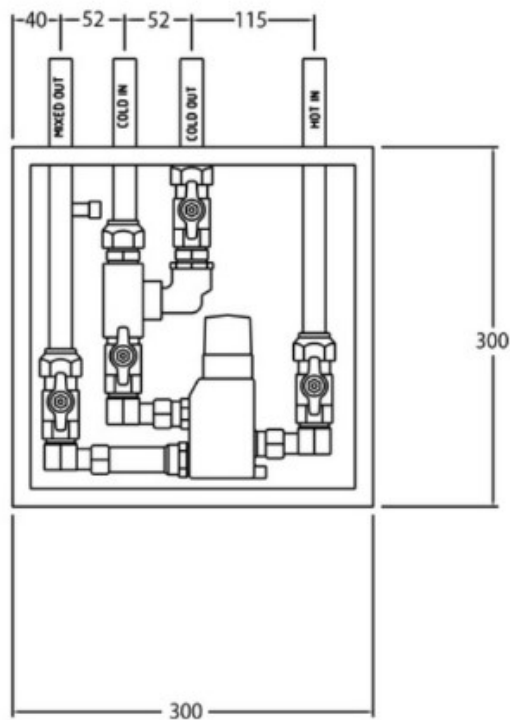
Product code: 9230

Pre-plumbed MAG-TMV with 4 Pipes

Description

Fm Mattsson TMV Inwall cabinet with cold water bypass with compact, concealed box 4 pipe system one way. Pre-Plumbed in high quality stainless steel box (300 x 300 x 75mm). Suitable for concealed (recessed) and exposed (wall mounted) installation.

Designed to deliver tempered water to single or multi-point installations without the risk of unauthorised persons altering preset temperature. Suitable for hospitals, nursing homes, child care centres and public areas.



Flow Table

Pressure (kPa)	Flow (l/min)
100	15.5
200	22.5
300	28
400	32.5
500	36.5
600	40.3



	Component	Watermark Licence No
A	TMV x 1	Lic 1186
B	Chrome Ball Valve x2	Lic 2387
C	M/F Brass Extension x1	Lic 2387
D	Elbow x1	Lic 2387
E	Tee Piece x1	Lic 2387
F	Male Union x1	Lic 2387
G	M/M Elbow x1	Lic 2387
H	Ball Valve x1	Lic 21813

Features

- 9230 PB Thermostatic Mixer with a fixed temperature knob
- Pilot holes for easy stud fixing and 150mm extended pipes for quick connection
- Cold water inlet with 20mm ball valve ensures supply during servicing
- Lockable lid, keyed alike for security
- Operates from 50kPa to 1000kPa; recommended 100kPa to 500kPa
- Swedish-made valves

Product code: 9230-0004

MAG-TMV with 4 Pipes - Thermal Flush

Key Benefits

Thermal flush system for warm and cold pipework. TMV box includes multiple isolating valves to deliver flushing operations and disinfection through both the warm and cold water outlets to kill bacteria between the valves and outlets. Patent pending thermal treatment system which disinfects outlets for both warm and cold water-controlled flushing.

Dimensions

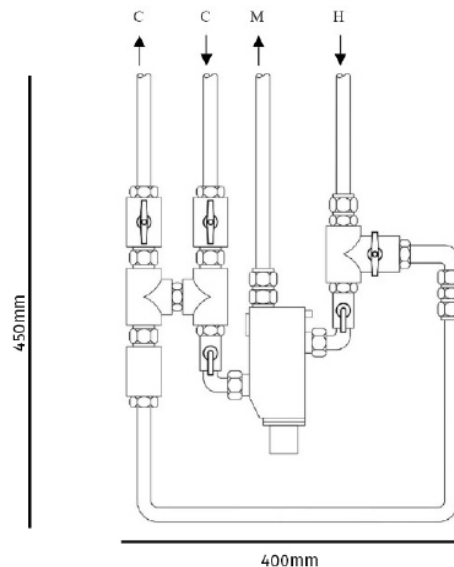
400mm width x 450mm height x 80mm depth



Legionella Control Flush System

Only authorised staff and licensed or registered plumbing practitioners are to conduct thermal flush disinfect mode to prevent scalding during the process.

Ensure all outlets to be flushed are unoccupied during the process. Ensure full compliance in accordance with all relevant applicable codes and standards.



Features

- Legionella Control Flush System: Purges both warm and cold pipework
- One-Stage Thermal Flush Process: Effectively kills bacteria in both warm and cold pipework
- Efficient Water Hygiene Management: Enhances your water hygiene program
- Integrated TMV System: Includes FM Mattsson valves, approved by Watermark and NSW Health
- Retrofit or Custom Solutions: Can be fitted into existing buildings or customized for refurbishments
- Seamless Operation: TMVs will function normally whether or not the thermal flush is used
- Operation Instructions Provided: System comes with detailed instructions
- No Procedure Changes Needed: Maintains existing service procedures for FM Mattsson TMVs
- 5-Year Valve Warranty: Offers long-term reliability
- Australian Made: Proudly manufactured in Australia

Flushing Instructions And How To Operate

Normal Mode

1. Hot water flows through the open "D" isolating valve feeding the hot inlet to the Mattsson TMV
2. Cold water flows through the open "B" and open "C" isolating valves feeding the cold inlet to the Mattsson TMV
3. Cold water also flows through the open "A" isolating valve and feeds cold water to the outlets downstream ie basins/showers
4. Isolating valve "E" connected to the disinfection loop is closed

Watch the video Video: https://youtu.be/E_kOGUTO-7I

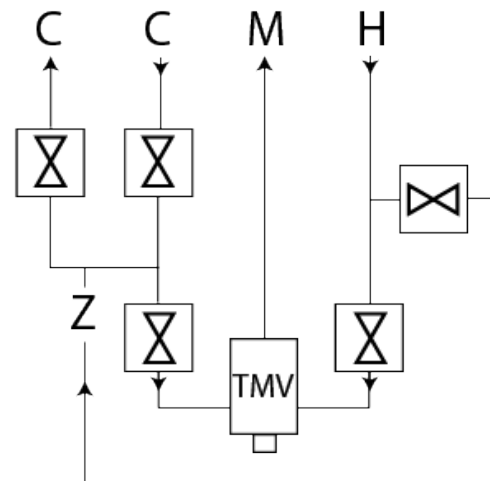
Disinfection Mode

1. To disinfect the cold water inlet to the Mattsson TMV, close isolating valves "A" and "B"
2. Open isolating valve "E" to allow hot water to thermally flush the cold water line through the mixed water line to open outlets downstream
3. To disinfect the cold water outlet line, close isolating valves "C" and "D"
4. Then open isolating valve "A." Hot water will now flush through the cold water bypass to open outlets downstream
5. After flushing, close isolating valve "E" to revert to normal operation
6. Finally, open isolating valve "B"

Watch the video Video: <https://youtu.be/A9YfxiQIN-s>

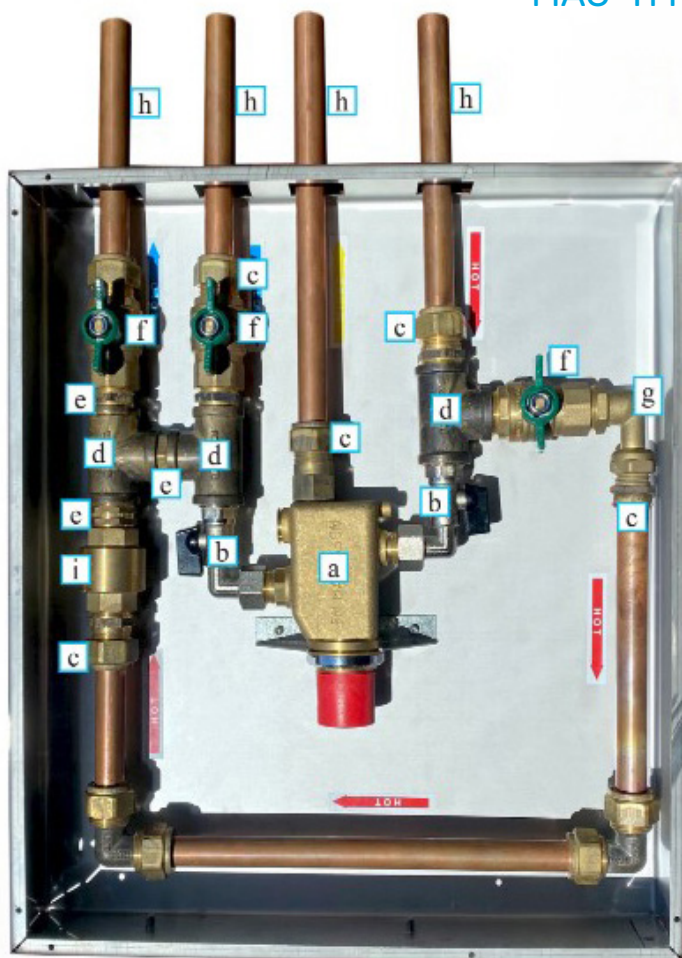
Components

Letter	Description
H	Hot Water
M	Mixed Water
C	Cold Water
↓	Direction of Flow
Z	Check Valve
⊗	Isolation Valve
⊗	Bleeder Valve



Product code: 9230-0004

MAG-TMV with 4 Pipes - Thermal Flush



	Component	Watermark Licence No
A	TMV x1	Lic 1186
B	Chrome Ball Valve x 2	Lic 02072
C	Brass Union x 5	Lic 2503
D	Tee Piece x 3	Lic 2503
E	Hex Nipple x 3	Lic 2503
F	Ball Valve x 3	Lic 21813
G	Brass Elbow x 1	Lic 2503
H	Cooper Pipe x 4	Lic 25726
I	Check Valve x 1	Lic 2503

Product code: 9230-0001 till 0008

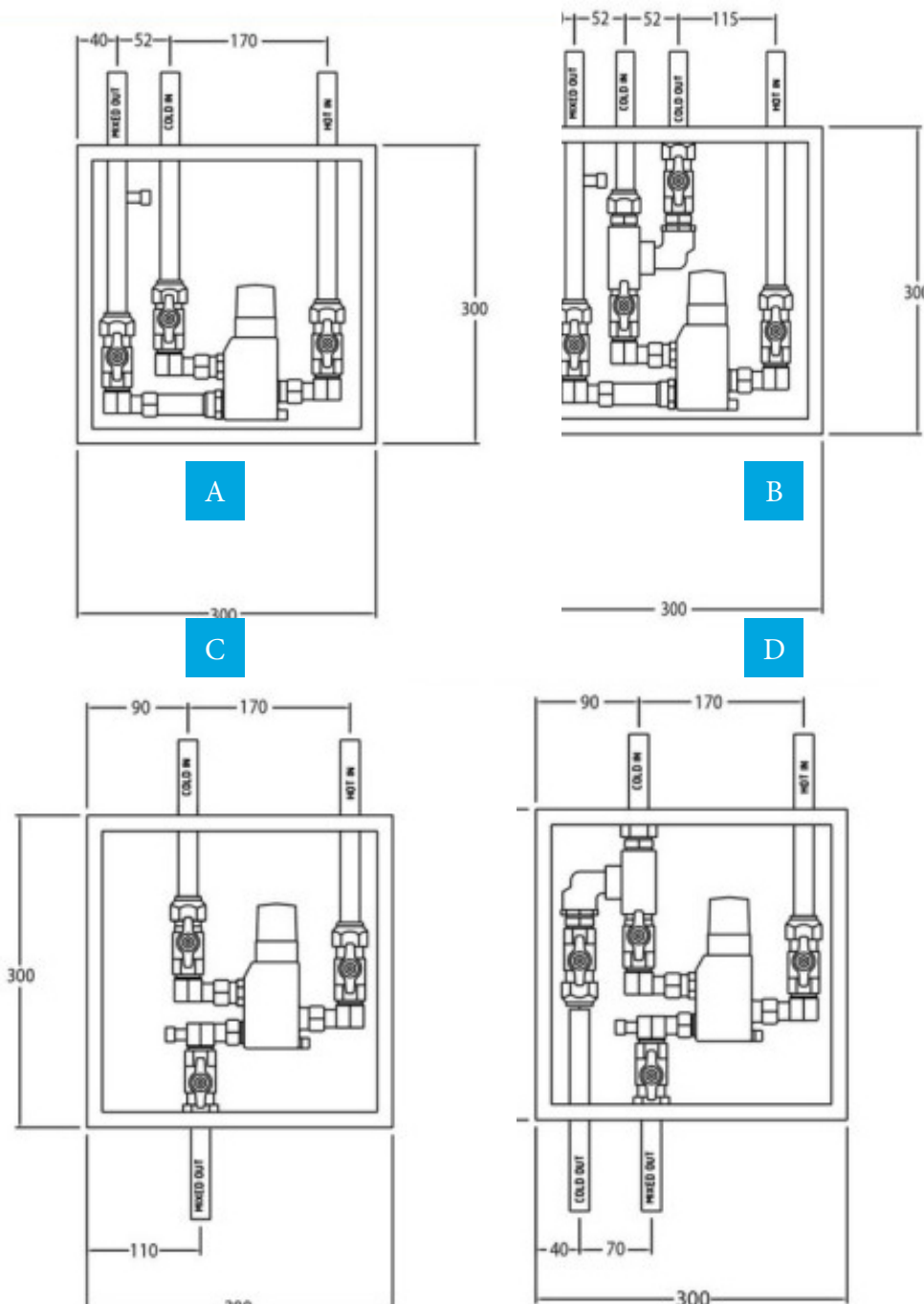
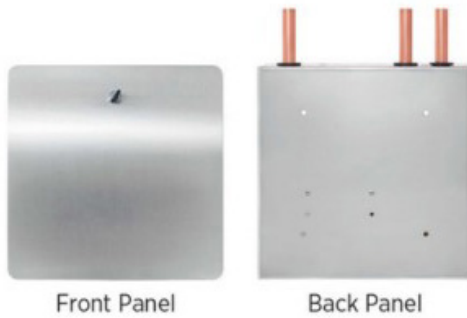
PBTMV Pre-Plumbed Standard Box

Key Benefits

Stainless steel box size: 300mm x 300mm x 75mm

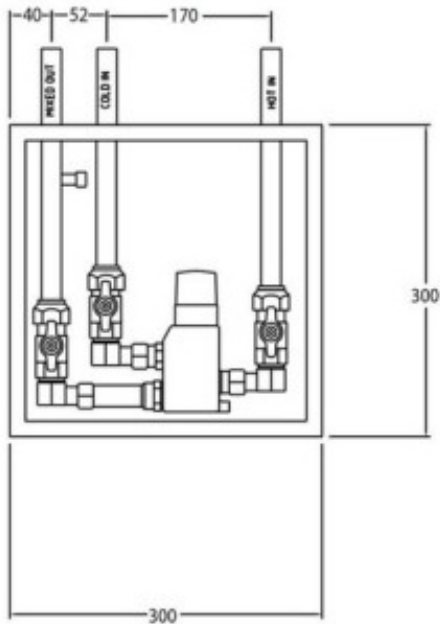
Panel door on recessed box: 330mm x 330mm x 1.5mm

4 pipes has Cold Water Bypass.



A	3 Pipes One Way
	- 9230 0005 concealed box - 9230 0007 wall mounted box
B	4 Pipes One Way with cold water bypass
	- 9230 0001 concealed box - 9230 0003 wall mounted box
C	3 Pipes Two Ways
	- 9230 0006 concealed box - 9230 0008 wall mounted box
D	4 Pipes Two Ways with cold water bypass
	- 9230 0002 concealed box - 9230 0004 wall mounted box

More details are available on the other pages



PBTMV Pre-Plumbed 3 Pipes One Way

Key Benefits

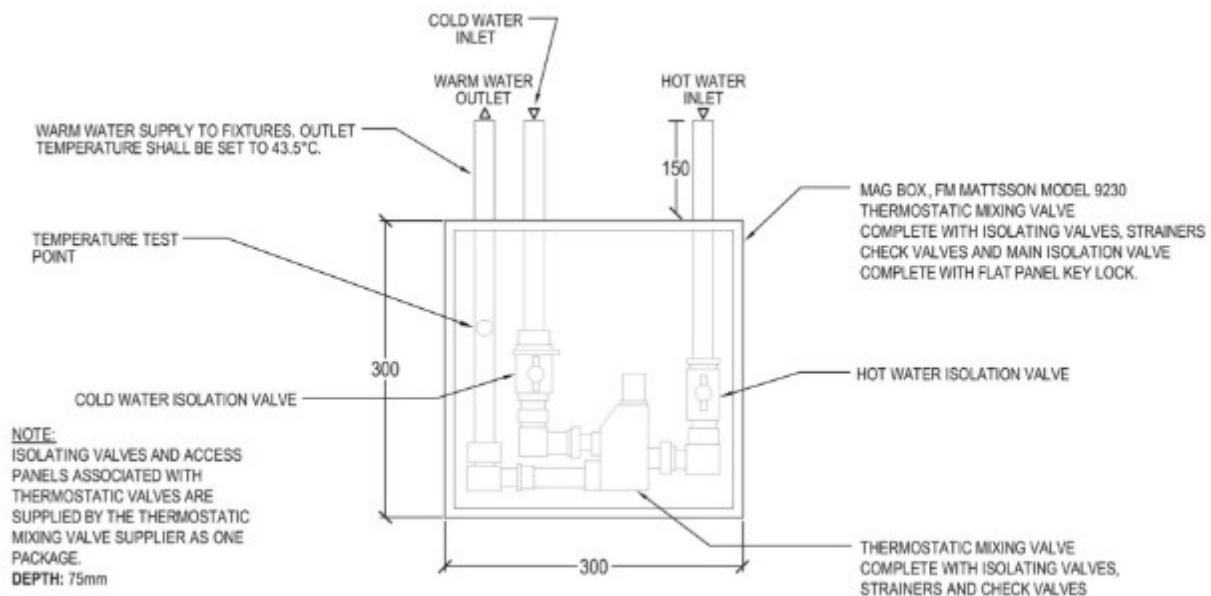
Stainless steel box size: 300mm x 300mm x 75mm

Panel door on recessed box: 330mm x 330mm x 1.5mm

Product Code

- 9230 0005 concealed box
- 9230 0007 wall mounted box.

3 PIPES ONE WAY



Product code: 9230-0005 & 9230-0007

MAG Mattsson Mark II Pre-Plumbed Box

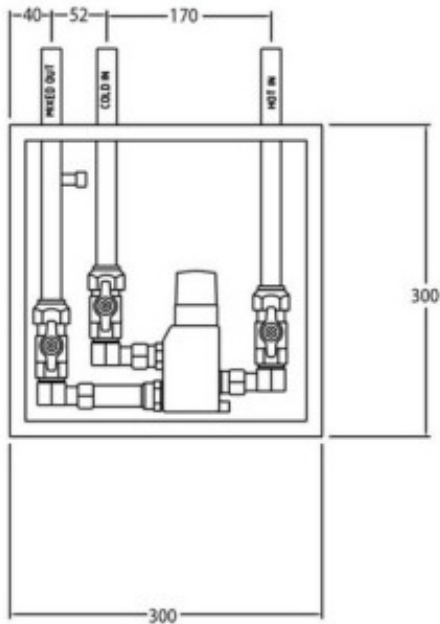
Key Benefits

Stainless steel box size: 300mm x 300mm x 75mm

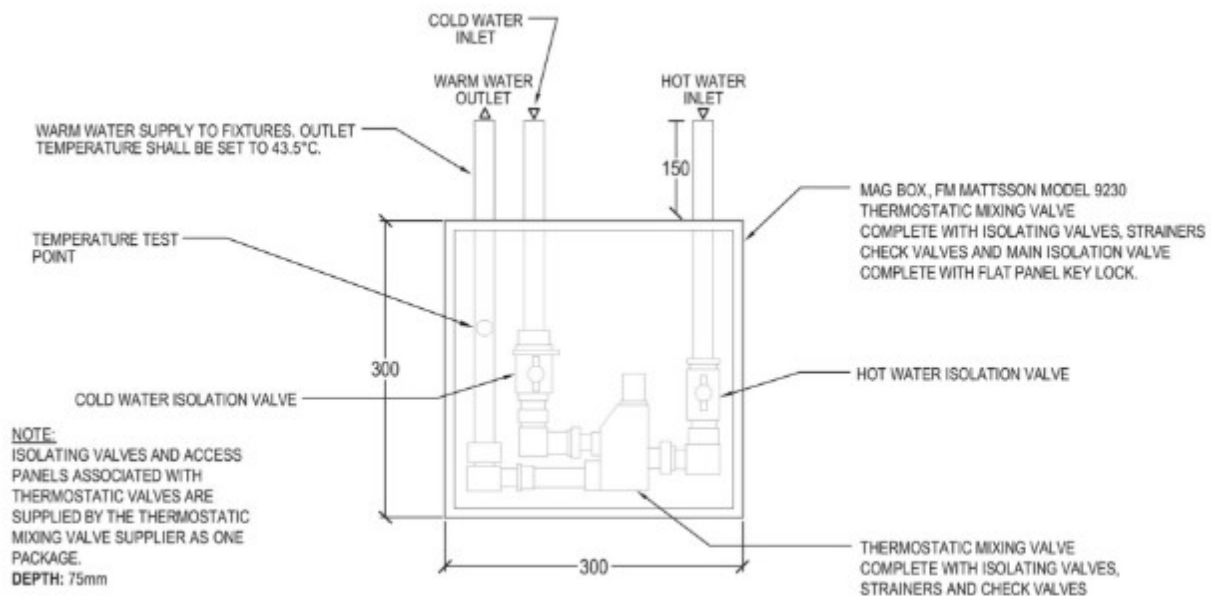
Panel door on recessed box: 330mm x 330mm x 1.5mm

Product Code

- 9230 0005 concealed box
- 9230 0007 wall mounted box.



3 PIPES ONE WAY



Product code: Pre-Plumbed PBTMV

MAG MATTSSON MARK II TMV Cabinet DF Finish

MAG-02 - Stainless Steel box only, with door and frame

Heavy Duty Door and Frame with Concealed Fixings.
Used in facilities where security is paramount.

Dimensions:

- Box Size 300mm x 300mm x 75mm
- Door and Frame on recessed box is 355mm x 355mm x 1.5mm

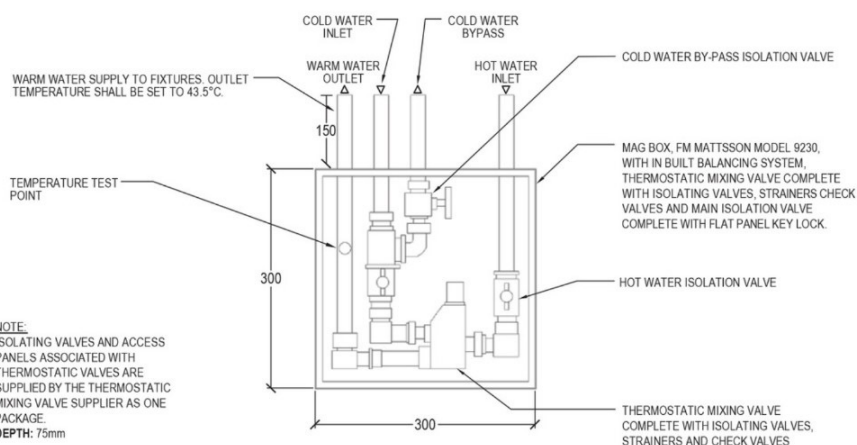


Mattsson Mark II Box with Door and Frame type

- 9230-DF01 - 4 pipes one way with Cold Water Bypass (concealed/recessed) box
- 9230-DF02 - 4 pipes two way with Cold Water Bypass (concealed/recessed) box
- 9230-DF03 - 4 pipes one way with Cold Water Bypass (exposed/wall mounted) box
- 9230-DF04 - 4 pipes two way with Cold Water Bypass (exposed/wall mounted) box
- 9230-DF05 - 3 pipes one way (concealed/recessed) box
- 9230-DF06 - 3 pipes two way (concealed/recessed) box
- 9230-DF07 - 3 pipes one way (exposed/wall mounted) box
- 9230-DF08 - 3 pipes two way (exposed/wall mounted) box

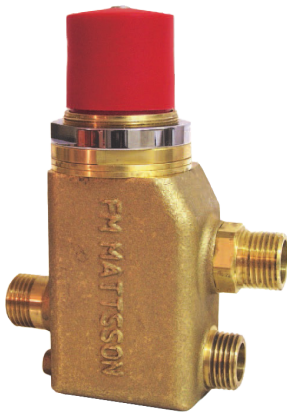
TMV Cabinet Onlyfinish (DF)

- 9230-DF01 - 4 pipes one way with Cold Water Bypass (concealed/recessed) box



MAG MATTSSON
Pressure Balanced Thermostatic Mixing Valve
4 Pipes One Way with Cold Water Bypass

Product code: 9230-0012



9230 8070 PBTMV Valve

6 Pipe System including cold and hot water bypass

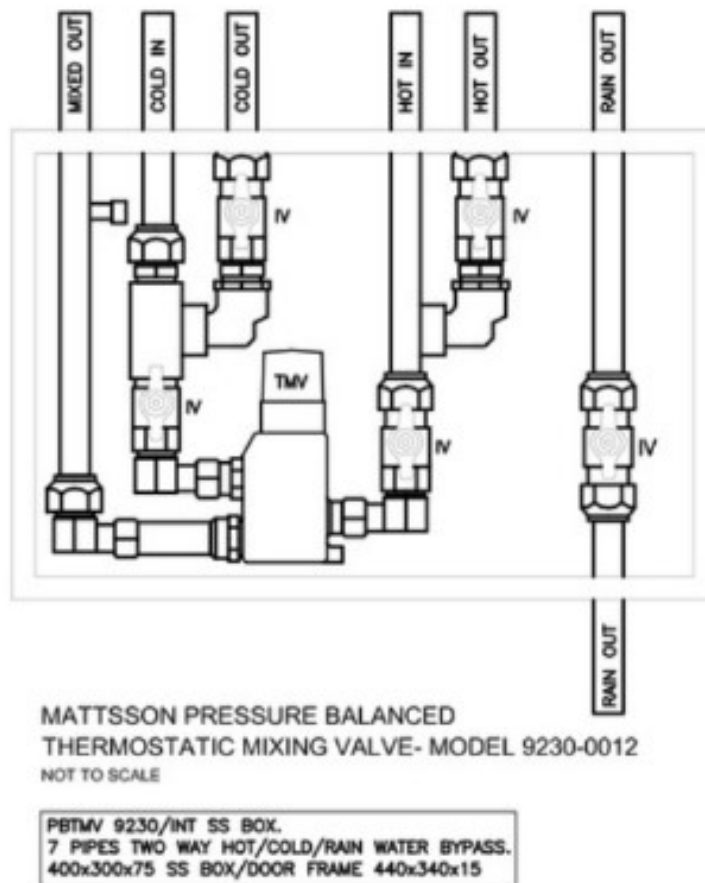
Special Plumbing Configurations

SPCs are plumbed into various size boxes, please ensure to box size meets your requirements. All boxes are fitted with flat panel door 30mm later than box size.

Models:

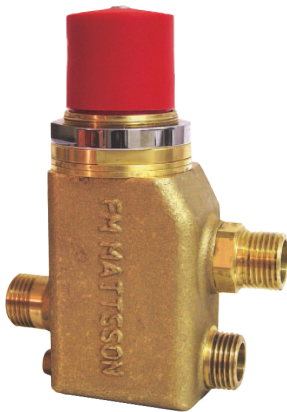
- 9230-0012: recessed box
- 9230-0012W: wall mounted box

Box Size: 350mm x 300mm x75mm with flat panel door.



Product code: 9230-0013

5 Pipe System incl cold and hot water bypass



9230 8070 PBTMV Valve

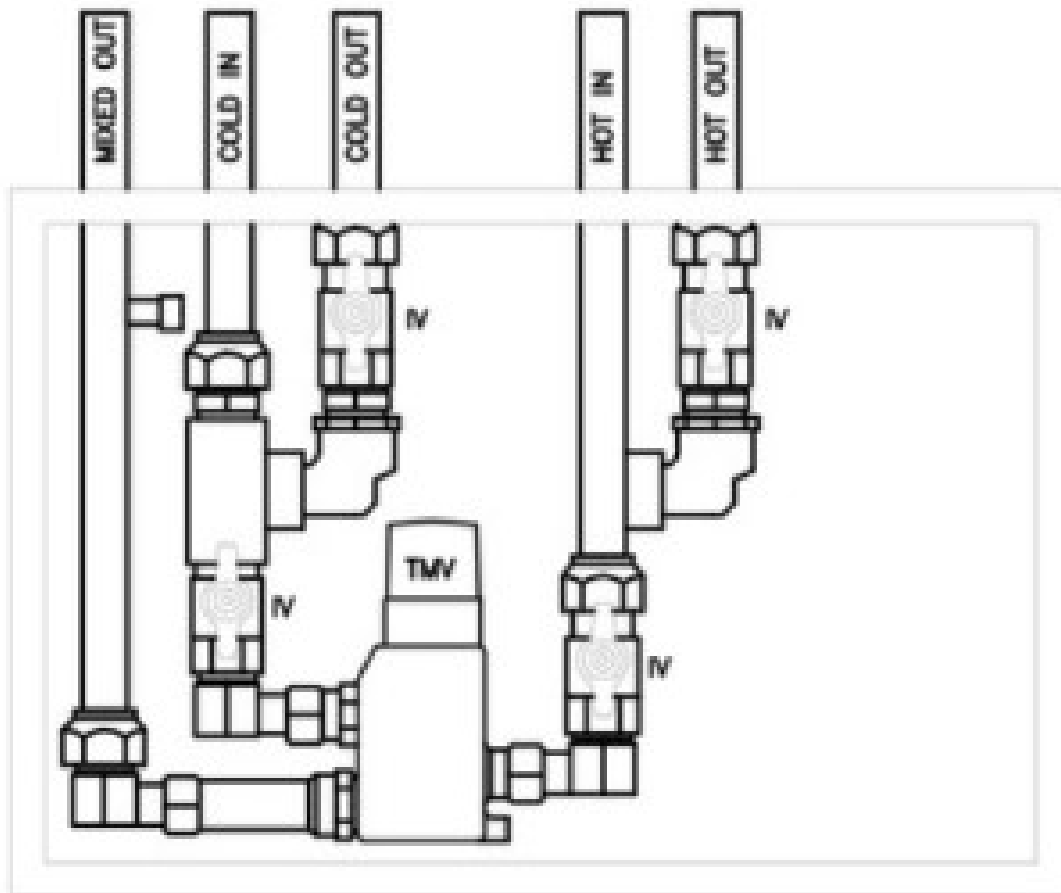
Special Plumbing Configurations

SPCs are plumbed into various size boxes, please ensure to box size meets your requirements. All boxes are fitted with flat panel door 30mm later than box size.

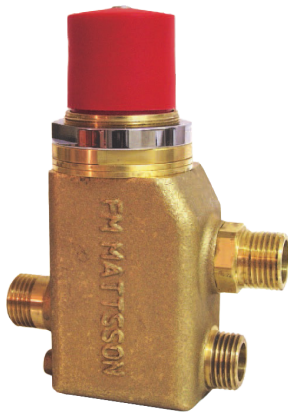
Models:

- 9230-0013: recessed box
- 9230-0013W: wall mounted box

Box Size: 350mm x 300mm x75mm with flat panel door.



Product code: 9230-0014



9230 8070 PBTMV Valve

5 Pipe System incl cold and hot water bypass rainwater connection

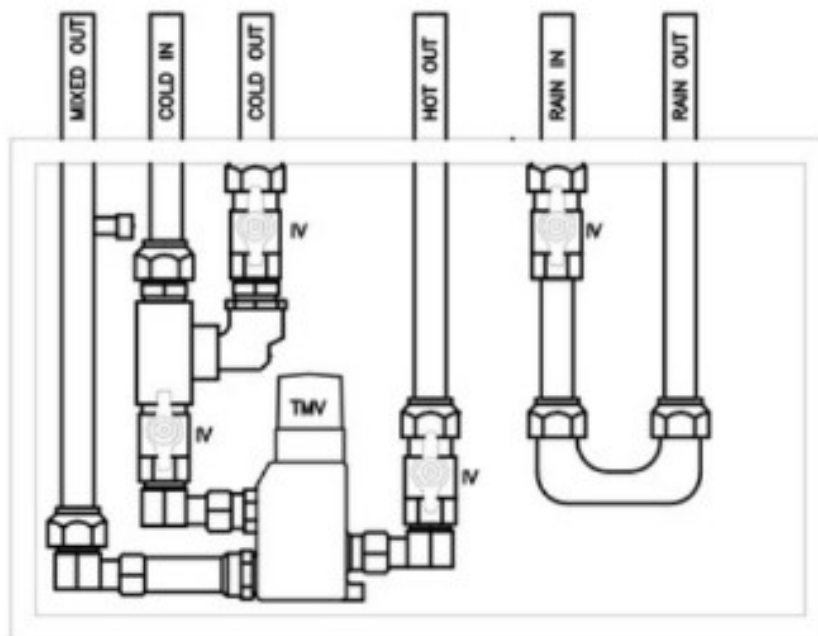
Special Plumbing Configurations

SPCs are plumbed into various size boxes, please ensure to box size meets your requirements. All boxes are fitted with flat panel door 30mm later than box size.

Models:

- 9230-0015: recessed box
- 9230-0015W: wall mounted box

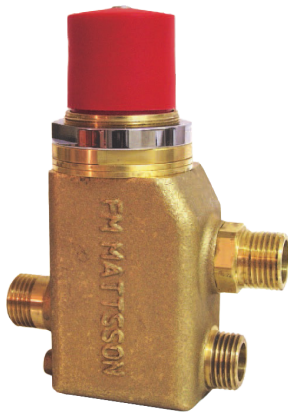
Box Size: 350mm x 300mm x75mm with flat panel door.



MATTSSON PRESSURE BALANCED
THERMOSTATIC MIXING VALVE- MODEL 9230-0014
NOT TO SCALE

PBTMV 9230/INT SS BOX.
6 PIPES ONE WAY COLD/RAIN WATER BYPASS.
400x300x75 SS BOX/DOOR FRAME 440x340x15

Product code: 9230-0015



9230 8070 PBTMV Valve

7 Pipe System including cold and hot water bypass and rain water connection

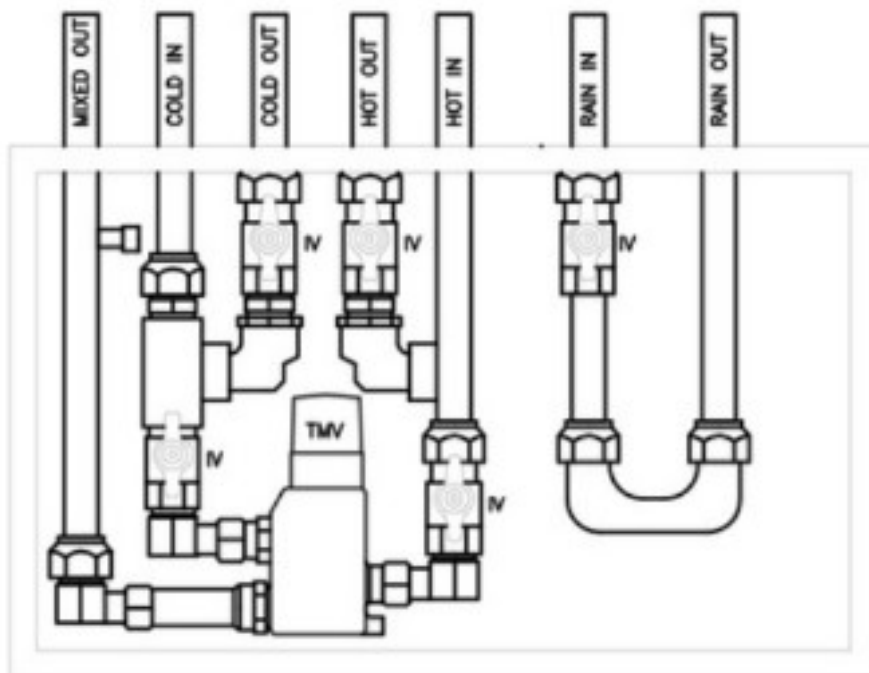
Special Plumbing Configurations

SPCs are plumbed into various size boxes, please ensure to box size meets your requirements. All boxes are fitted with flat panel door 30mm later than box size.

Models:

- 9230-0015: recessed box
- 9230-0015W: wall mounted box

Box Size: 350mm x 300mm x75mm with flat panel door.



MATTSSON PRESSURE BALANCED
THERMOSTATIC MIXING VALVE- MODEL 9230-0015
NOT TO SCALE

PBTMV 9230/INT SS BOX.
7 PIPES ONE WAY HOT/COLD/RAIN WATER BYPASS.
400x300x75 SS BOX/DOOR FRAME 440x340x15

FM Mattsson Maintenance Requirements

Compulsory Requirements (every 5 year)

Replace sensor origin and wax element cartridge every 5 years.

Every 12 Months (before the 5 year period)

FM Mattsson Pressure Balanced Mixing Valves require regular intervals, minimum every 12 months.

1. Check the temperature and make sure that the correct temperature is obtained from the mixer.
2. Check the flow from the mixer is sufficient
3. Perform a fail safe test

These requirements is part of the Australian Standards.

Given that water conditions can vary by region, we recommend that the Management or Owner of the premises, with the help of their maintenance plumber, conduct a risk assessment and establish a tailored maintenance schedule for our TMVs.